

A Celebration of **Research**
at the Louisville Medical Center



RESEARCH!

Louisville 2010

October 11-15

UNIVERSITY OF
LOUISVILLE



UL Health Care

**Jewish Hospital &
St. Mary's Foundation**

RESEARCH!

Louisville 2010

Research!Louisville marks its fifteenth anniversary of annual celebrations of health-related research sponsored by Jewish Hospital & St. Mary's Foundation, Norton Healthcare, UofL Health Care and the University of Louisville.

Research!Louisville Goals:



Promote excellence in health sciences research



Promote public awareness of health sciences research



Promote the Louisville Medical Center



Generate additional funding for health sciences research



Directions to Louisville Medical Center (LMC)

From North to LMC's North Gateway:

Take I-65 South to Exit 136C, Jefferson Street Downtown.

Stay in left exit lane (Brook Street).

Follow exit ramp onto Brook Street.

Go one block and turn right on Market Street

Go one block and turn right on Floyd Street.

Go under I-65 overpass.

The North Gateway is located at the intersection of South Floyd Street and Muhammad Ali Boulevard.

From South (airport) to LMC's South Gateway:

Take I-65 North to Exit 136A, Broadway/Chestnut Street.

This exits onto Brook Street.

Go one block.

The South Gateway is located at the intersection of South Brook Street and Broadway.

For more Information Contact:

Bonnie Dean
(502) 852-2647 or 550-3928

Martin Kramer
(502) 852-7794

Fax: (502) 852-7392

www.researchlouisville.org



RESEARCH!

Louisville 2010



Schedule at a Glance — October 11-15

PRE-R!L NURSING RESEARCH FORUMS WILL BE HELD THURSDAY/FRIDAY, OCT 7-8 AT THE JEWISH HOSPITAL RUDD HEART AND LUNG CONFERENCE CENTER.

Clinician Researchers: Making a Difference in Patient Care

Sponsors: Norton Healthcare Institute for Nursing, Baptist Hospital East, Jewish Hospital and St. Mary's Healthcare, UofL Health Care, Greater Louisville Chapter AACN, Sigma Theta Tau: Iota Gamma, Lambda Psi and Iota Zeta Chapters, Kentucky Organization of Nurse Leaders

Thursday, October 7th

4 p.m. – 8 p.m. Invitation Only

Pre-R!L Research Mentor Workshop

Mentoring Clinician Researchers

Speaker: Marianne Chulay, Ph.D., RN, FAAN, consultant in clinical research and critical care

Jewish Hospital Rudd Heart and Lung Conference Center
200 Abraham Flexner Way

CONTACT: Mary June Cleaver, MSN, RN (502) 587-4249

Friday, October 8th

7:30 a.m. – 4 p.m. Registration required

Pre-R!L Nursing Research Conference

Clinician Researchers: Making a Difference in Patient Care

Speakers: Marianne Chulay, Ph.D., RN, FAAN, consultant in clinical research and critical care, and local nurse researchers presenting current clinical research projects.

Jewish Hospital Rudd Heart and Lung Conference Center
200 Abraham Flexner Way

CONTACT: Mary June Cleaver, MSN, RN (502) 587-4249

Monday, October 11th

8 a.m. – 4 p.m.

IOU: Interventions, Outcomes and You

Speaker: Shirley Moore, RN, Ph.D., FAAN, Professor and Associate Dean for Research, Francis Payne Bolton School of Nursing at Case Western Reserve University

UofL Hospital Auditorium
530 S. Jackson Street

CONTACT: Reetta Stikes at (502) 562-3710 or junest@ulh.org to register
(Contact hours will be provided)

Tuesday, October 12th

9 a.m. - Noon

Professional/Clinical Student Research Showcase

Lobby, Clinical and Translational Research Building

505 South Hancock Street

CONTACT: Martin Kramer (502) 852-7794

9:30 a.m. – 1:30 p.m. daily

Tuesday-Friday, Oct 12-15

Research!Louisville at the Louisville Science Center

Students and Teachers (grades 6-12) interact with scientists engaged in ground-breaking medical research (reservations required)

Louisville Science Center

727 West Main Street

CONTACT: Megean Kincaid (502) 560-7146

1 p.m.– 4 p.m.

Graduate Student Research Showcase

Lobby, Clinical and Translational Research Building

505 South Hancock Street

CONTACT: Martin Kramer (502) 852-7794

Wednesday, October 13th

9 a.m. – noon

Postgraduate Research Showcase

Lobby, Clinical and Translational Research Building

505 South Hancock Street

CONTACT: Martin Kramer (502) 852-7794

GRANT WORKSHOP:

12:30 – 1:30 p.m. Mock NIH Grant Review (North Conference Room)

1:30 – 3:20 p.m. Lecture (North Conference Room)

3:30 – 4:40 p.m. F31/F32 Workshop (Conference Room 124)

Clinical and Translational Research Building

505 South Hancock Street

Mock NIH Grant Review

North Conference Room

Clinical and Translational Research Building

505 South Hancock Street

CONTACT: Dr. Peter Rowell (502) 852-7794



1:30 p.m. – 3:20 p.m.

***Congressionally Directed Medical Research Programs (CDMRP):
A Mission to Fund Innovation in Research***

Speaker: E. Melissa Kaime, M.D., Captain, Medical Corps, U.S. Navy, Director, CDMRP, will discuss the agency's research priorities and available funding opportunities.

North Conference Room
Clinical and Translational Research Building
505 South Hancock Street

CONTACT: Beverly Daly, Office of Sponsored Programs
(502) 852-8360 or (502) 852-1619 or b.daly@louisville.edu

3:30 p.m. – 4:40 p.m.

***F31/F32 Fellowship Applications for Pre- and Post-doctoral Trainees
Workshop***

Speaker: Dr. Samuel Adunyah, Professor of Biochemistry and Distinguished Chairman of the Dept. of Cancer Biology at Meharry Medical College
North Conference Room

Clinical and Translational Research Building
505 South Hancock Street

CONTACT: Dr. Thomas Geoghegan (502) 852- 7824 or tom.geoghegan@louisville.edu

Thursday, October 14th

9 a.m. – 10 a.m.

Funding, Career, and Collaboration Opportunities with the NIH

Phuong Kim Pham, Ph.D. of the Office for Research on Disparities and Global Mental Health, National Institute of Mental Health, will present an informal discussion on funding opportunities to help you pursue your research career.

Conference Room 124, Clinical and Translational Research Building
505 South Hancock Street

Target Audience: first, second & third year assistant professors

RSVP is REQUIRED to attend. No entry allowed the day of without

RSVP. Breakfast will be served. This event will be capped at 50.

CONTACT: Research Integrity: ori@louisville.edu or (502) 852-2454

9 a.m. – noon Showcase

Noon – 1 p.m. Reception

Faculty Research Showcase & Reception

Lobby, Clinical and Translational Research Building
505 South Hancock Street

CONTACT: Martin Kramer (502) 852-7794

1 p.m. - 1:30 p.m. Registration

1:30 p.m. - 2:30 p.m. Presentation

2:30 p.m. - 4 p.m. Q & A, Book Signing GEAR Presentation

Gaining Essentials about Research (GEAR) sponsored by Norton University and the Norton Healthcare Office of Research Administration (NHORA)

Keynote Speaker: Mrs. Eva Mozes Kor, a Holocaust survivor and part of Josef Mengele's medical experiment on twins.

The Temple, 5101 US Hwy 42

CONTACT: Holly Horn at (502) 456-7193 or Holly.horn@nortonhealthcare.org
(registration required)



1 p.m. – 4 p.m.

Social Responsibility of Science

Speakers: Phuong Kim Pham, Ph.D., Office of Research on Disparities and Global Mental Health, NIMH and Richard Rodriguez, MBA, Director, Div. of Tech. Dev and Transfer, NIH

North Conference Room, Clinical and Translational Research Building,
505 South Hancock Street

CONTACT: Laura Zanewicz at (502) 852-2454 or lkzane01@louisville.edu to register

4 p.m. – 5:30 p.m.

Mad Scientist Mixer

The UofL Office of Technology Transfer and The Research Integrity Program invite you to our annual event, where spirited drinks and tasty treats are served in an informal, fun atmosphere.

Lobby, Clinical and Translational Research Building
505 South Hancock Street

RSVP to the OTT at belinda.adanick@louisville.edu or (502) 852-2965

Friday, October 15th

8 a.m. – 9 a.m.

Neurological Surgery/Neurology Grand Rounds featuring Dr. Kevin Tracey

Topic: *The Inflammatory Reflex*

North Conference Room, Clinical and Translational Research Building
505 South Hancock Street

CONTACT: Ruth O'Bryan (502) 852-8059

Noon – 1 p.m.

Winning Posters Showcase and Reception

Lobby, Clinical and Translational Research Building
505 South Hancock Street

CONTACT: Martin Kramer at (502) 852-7794

1 p.m. - 2:30 p.m.

RIL 2010 Awards Ceremony and Keynote Address

Topic: *Neuroscience and Immunology Collide: Neural Regulation of Immunity*

Keynote Speaker: Kevin J. Tracey, M.D., Professor and President, Elmezzi Graduate School of Molecular Medicine, Director of The Feinstein Institute for Medical Research
North Conference Room,
Clinical and Translational Research Building
505 South Hancock Street

CONTACT: Bonnie Dean at (502) 852-2647



RESEARCH!

Louisville 2010



Keynote Speaker

Friday, October 15

1:00 p.m.

North Conference Room, Clinical
and Translational Research Building



Kevin J. Tracey, M.D., is director of The Feinstein Institute for Medical Research, and Professor and President of the Elmezzi Graduate School of Molecular Medicine in Manhasset, NY. A neurosurgeon by training, he is a leader within the field of inflammation research. His contributions to science include discovery of the direct inflammatory activity of tumor necrosis factor-alpha (TNF), and the therapeutic potential of monoclonal anti-TNF antibodies; the cytokine activity of HMGB1, and the therapeutic potential to target this mediator at the intersection of sterile and infectious inflammation; and the neurological basis for controlling immunity by reflex mechanisms.

Dr Tracey received his B.S. (Chemistry) from Boston College in 1979 and his M.D. from Boston University in 1983. From 1983 to 1992 he trained as a neurosurgeon at the New York Hospital/Cornell University Medical Center, and was a guest investigator at the Rockefeller University. In 1992, Tracey moved his lab to the Feinstein Institute in Manhasset, NY. He also opened a neurosurgery practice there, continuing until 2001, when he was appointed the founding program director for the General Clinical Research Center, which received designation from the National Center for Research Resources (NCRR) of the National Institutes of Health (NIH).

Dr Tracey's honors include an Honorary degree from the Karolinska Institute, Stockholm, Sweden in 2009; the DeWitt Stetten lectureship from The National Institutes of Health in 2007; and the Annual Clinical Science Lectureship in 2002 from the Karolinska Institute. He co-chaired the first international scientific congress addressing the "The Inflammatory Reflex," a Nobel Conference in 2004 of the Karolinska Institute; and co-chaired the "First HMGB1 Cytokine World Congress" in 2003 in Saltsjobaden, Sweden. Dr. Tracey is Editor in Chief of *Molecular Medicine*, and Advisory Editor of *The Journal of Experimental Medicine*. His critically acclaimed book, *Fatal Sequence: The Killer Within*, published by the Dana Press in 2005, recounts the hospital course of a young patient with sepsis who changed his life, and the series of remarkable events that shaped his research.



727 West Main Street

Tuesday – Friday, October 12 – 15

Daily from 9:30 a.m. – 1:30 p.m.

Research!Louisville at the Louisville Science Center

Energize your students about careers in science at the Louisville Science Center! Kentucky students and teachers grades 6-12 are invited to apply for a Research!Louisville sponsored program to interact with a leading scientist engaged in groundbreaking medical research. Selected groups will also receive admission to the Louisville Science Center, an IMAX film, and lunch.

*Applications are available online at www.LouisvilleScience.org/teachers
Recipients will be notified in September. This event is by reservation only.*

Sponsored by Jewish Hospital & St. Mary's HealthCare, Norton Healthcare, UofL Health Care, and the University of Louisville

For more information, contact Megean Kincaid or Molly Carpenter at (502) 561-6100, ext 6143 or 6102 or megean.kincaid@louisvilleky.gov or molly.carpenter@louisvilleky.gov



Lectures and Workshops

Note: *Pre-Research!Louisville nursing research forums Thursday/ Friday, Oct 7-8 will be held at the Jewish Hospital Rudd Heart and Lung Conference Center.*

CONTACT : *Mary June Cleaver, MSN, RN (502) 587-4249*

THURSDAY, OCTOBER 7th

Pre-Research!Louisville Research Mentor Workshop

4 p.m. – 8 p.m. Invitation only

**Jewish Hospital Rudd Heart and Lung Conference Center
200 Abraham Flexner Way**

Mentoring Clinician Researchers

Speaker: Marianne Chulay, Ph.D., RN, FAAN, consultant in clinical research and patient care. The research mentor workshop will focus on practical methods and processes for enhancing nursing research in hospital settings at the unit level.

CONTACT: Mary June Cleaver, MSN, RN (502) 587-4249.

FRIDAY, OCTOBER 8th

Pre-Research!Louisville Nursing Research Conference

7:30 a.m. – 4 p.m.

**Jewish Hospital Rudd Heart and Lung Conference Center
200 Abraham Flexner Way**

Clinician Researchers: Making a Difference in Patient Care

Speakers: Marianne Chulay, Ph.D., RN, FAAN, consultant in clinical research and critical care, and local nurse researchers presenting current clinical research projects. This all-day nursing research conference will cover key aspects of nursing research, development of research questions, involvement of staff in conducting research, and examples of nursing research conducted in local hospitals.

Target Audience: research mentors, nurse leaders, direct care nurses, advanced practice nurses, clinicians, nursing faculty, nurse researchers, and nursing students.

CONTACT: Mary June Cleaver, MSN, RN (502) 587-4249 **Registration required.**

Sponsors: Norton Healthcare Institute for Nursing, Baptist Hospital East, Jewish Hospital and St. Mary's Healthcare, UofL Health Care, Greater Louisville Chapter AACN, Sigma Theta Tau: Iota Gamma, Lambda Psi and Iota Zeta Chapters, Kentucky Organization of Nurse Leaders

MONDAY, OCTOBER 11th

8 a.m. – 4 p.m.

UofL Hospital Auditorium
530 South Jackson Street

IOU: INTERVENTIONS, OUTCOMES AND YOU

Speaker: Shirley Moore, RN, Ph.D., FAAN,

will discuss the development, monitoring and evaluation of patient care interventions. Dr. Moore is the Edward J. and Louise Mellen Professor of Nursing and Associate Dean for Research at the Francis Payne Bolton School of Nursing at Case Western Reserve University. Dr. Moore's research background includes a series of studies aimed at developing and testing interventions used to improve physical and psychological health following cardiac events. The keynote address will be followed by a roundtable discussion, as well as break-out sessions designed to polish participants' research skills. Research, evidence-based practice and quality improvement posters will be displayed during the conference with three poster presenters selected for oral presentations. Contact hours will be provided.

Target Audience: Registered nurses and all clinical care providers

To register and for further information, contact Reeta Stikes, Advanced Practice Educator, University of Louisville Hospital (502) 562-3710 or junest@ulh.org or the Nursing Education and Research Development Department at (502) 562-3569

WEDNESDAY, OCTOBER 13th

GRANT WORKSHOP

12:30 – 1:30 p.m. Mock NIH Grant Review (North Conference Room)

1:30 – 3:20 p.m. Lecture (North Conference Room)

3:30 – 4:40 p.m. F31/F32 Workshop (Conference Room 124)

Clinical and Translational Research Building
505 South Hancock Street

Target Audience: all researchers, pre-and post-doctoral trainees

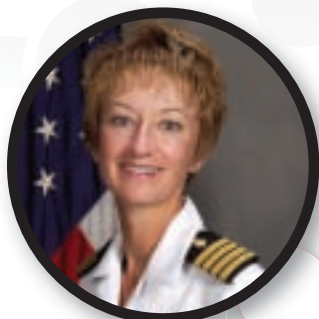
MOCK NIH GRANT REVIEW

Contact Dr. Peter Rowell (502) 852-7794

GRANT WORKSHOP LECTURE

E. Melissa Kaime, M.D., Captain,

Medical Corps, U.S. Navy, Director of the Congressionally Directed Medical Research Programs (CDMRP), will deliver a lecture entitled: *A Mission to Fund Innovation in Research*. The CDMRP is a major funding organization for cancer research, military relevant medical research and other disease-specific research. Through FY '09, the CDMRP has been responsible for managing \$5.4 billion in targeted appropriations.



Dr. Kaime will review how the federal funding agency solicits and funds highly innovative research and describe the unique features of the CDMRP that encourage creative, multidisciplinary, and patient-focused research.

Contact Beverly Daly, Office of Sponsored Programs
(502) 852-8360 or 852-1619 or b.daly@louisville.edu

F31/F32 FELLOWSHIP APPLICATION WORKSHOP

Samuel Evans Adunyah, Ph.D., Professor of Biochemistry and Distinguished Chairman of the Dept. of Cancer Biology at Meharry Medical College, will conduct the F31/F32 Workshop for pre- and post-doctoral trainees. The workshop is designed to enhance the competitiveness of the UofL Ph.D. students and postdoctoral trainees in NRSA fellowship applications. While it will stress the vital roles of the sponsor(s) and the applicant in the application, the content of a strong application, including excellent and enthusiastic letters of support, the training plan, the research plan, and the training environment will be discussed. The criteria for evaluation, as well as the ins and outs of a competitive application will be addressed.

Contact Thomas Geoghegan, Ph.D. (502) 852-3805 or tom.geoghegan@louisville.edu



THURSDAY, OCTOBER 14th

9 a.m. – 10 a.m.

**Conference Room 124, Clinical and Translational Research Building
505 South Hancock Street**

Funding, Career, and Collaboration Opportunities with the NIH

Target Audience: first, second and third year assistant professors

Phuong Kim Pham, Ph.D. of the Office for Research on Disparities and Global Mental Health, National Institute of Mental Health, will present an informal discussion on funding opportunities to help you pursue your research career. She will discuss job opportunities from post-docs to full-time positions and collaboration opportunities with NIH scientists. Come join our breakfast discussion for an opportunity to learn about what the NIH can offer you, as well as tips on how to fulfill your career interest through the aid of the NIH.

RSVP IS REQUIRED. No entry allowed the day of the event without an RSVP. This event will be capped at 50. Breakfast will be served.

Contact Research Integrity ori@louisville.edu or (502) 852-2454

THURSDAY, OCTOBER 14th

1 p.m. – 4 p.m.

The Temple

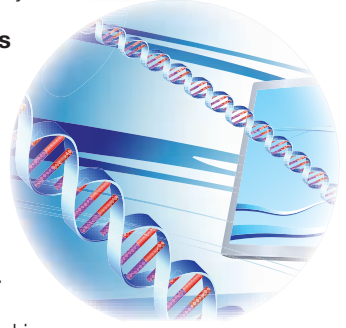
5101 US Highway 42

Gaining Essentials about Research (GEAR) sponsored by Norton University and the Norton Healthcare Office of Research Administration (NHORA)

Target Audience: Researchers, Students, Community

GEAR presents keynote speaker, **Mrs. Eva Mozes**

Kor. Mrs. Kor is a Holocaust survivor and part of the Josef Mengele's medical experiment on twins when Eva and her twin sister, Miriam, were prisoners at the Auschwitz Concentration Camp. She is founder of the Holocaust Museum and Education Center in Terre Haute, Indiana, and the Children of Auschwitz Nazi's Deadly Lab Experiment Survivors (C.A.N.D.L.E.S.). This organization of Mengele Twins has located and reunited many survivors of the experiments and is dedicated... "to heal the pain, to teach the truth, to prevent the prejudices."



Contact Holly Horn at (502) 456-7193 or holly.horn@nortonhealthcare.org

THURSDAY, OCTOBER 14th

1 p.m. - 2:15 p.m.

Conference Room 124, Clinical and Translational Research Building
505 South Hancock Street

SOCIAL RESPONSIBILITY OF SCIENCE WORKSHOP

Target Audience: Post-doctoral Fellows, Research Faculty

Part I

The UofL Research Integrity Program presents **Phuong Kim Pham, Ph.D.**, Office of Research on Disparities and Global Mental Health, NIMH, NIH. Dr. Pham will discuss the social responsibility of science and how researchers incorporate ethics into their work.

15 minute break

2:30 p.m. – 4 p.m.

Part II:

The UofL Research Integrity Program presents **Richard Rodriguez, MBA**, Director, Division of Tech Development and Transfer, NIH. Mr. Rodriguez will address the interplay of social responsibility and commercialization of scientific discoveries.



*To register and for further information contact
Laura Zanewicz at (502) 852-2425 or lkane01@louisville.edu*

THURSDAY, OCTOBER 14th

4 p.m. – 5:30 p.m.

Mad Scientist Mixer

**Lobby, Clinical and Translational Research Building
505 South Hancock Street**

The UofL Office of Technology Transfer (OTT) and the Research Integrity Program invite you to our annual Mad Scientist Mixer, where spirited drinks and tasty treats are served in an informal atmosphere.

RSVP to the OTT at Belinda.adanick@louisville.edu or (502) 852-2965

FRIDAY, OCTOBER 15th

8 a.m. – 9 a.m.

**North Conference Room, Clinical and
Translational Research Building
505 South Hancock Street**

**GRAND ROUNDS LECTURE:
“The Inflammatory Reflex”**

The departments of neurological surgery and neurology present **Kevin Tracey, M.D.**, Professor and President, Elmezzi Graduate School of Molecular Medicine and Director of The Feinstein Institute for Medical Research.



For further information, contact Ruth O'Bryan at (502) 852-8059.

FRIDAY, OCTOBER 15th

1 p.m. – 2 P.M. **Keynote Address**

2 p.m. – 2:30 p.m. **Awards Ceremony**

**North Conference Room, Clinical and Translational Research
Building
505 South Hancock Street**

**KEYNOTE ADDRESS: “Neuroscience and Immunology Collide:
Neural Regulation of Immunity”**

Target Audience: Community, faculty, staff, students, LMC hospital personnel

RIL 2010 presents keynote speaker, **Kevin Tracey, M.D.**, Professor and President, Elmezzi Graduate School of Molecular Medicine and Director of The Feinstein Institute for Medical Research in Manhasset, New York. Dr. Tracey is a neurosurgeon and world-renowned expert in the field of inflammation research. He is the author of the critically acclaimed book, **Fatal Sequence: The Killer Within**, published by Dana Press in 2005, which recounts the hospital course of a young patient with sepsis who changed his life, and the series of remarkable events that shaped his research.

Awards ceremony to follow.

For further information contact Bonnie Dean at (502) 852-2647 or bonnie.dean@louisville.edu

RESEARCH!

Louisville 2010

www.researchlouisville.org

